

Public Scoping Meeting Comment Form

North Branch Park River

NRCS Watershed Plan

February 17, 2016

Background

The Park River Joint Water Resource District (PRJWRD) was formed in 2013 between Walsh and Pembina Counties in an effort to develop flood damage reduction projects to alleviate impacts caused by high flows. The initial focus of the PRJWRD is aimed at the North Branch and Cart Creek tributaries of the Park River Watershed. Beginning in 2014, the PRJWRD began a state and locally financed planning effort to identify problems, establish watershed stakeholders, and review flood damage reduction strategies. In 2015, the PRJWRD secured funding provided by the NRCS through the Regional Conservation Partnership Program (RCPP). This funding allocated \$12 million dollars to eligible applicants as determined by the Red River Retention Authority (RRRA). The RCPP funding was made available to the PRJWRD for watershed planning in the North Branch Park River Watershed, which includes the Cart Creek tributary. Because these funds are provided by the NRCS, watershed planning must follow NRCS agency guidelines for compliance with National Environmental Protection Act (NEPA) requirements. Tasks required for the NRCS Watershed Plan are available in the *Feasibility Study and Plan of Work* document.

Purpose of Today's Meeting

The initial step in NRCS Watershed Planning, as directed by NEPA, is to allow for input from all interested parties including federal, state, and local agencies and other interested groups or persons. Initial input will be focused on resource concerns within the North Branch Watershed. Scoping must consider the following, but is not limited to this list. In order to gather input on resource concerns within the North Branch Watershed, we would request that the attached comment form be completed and provided to the PRJWRD.

Required NEPA Concerns for Scoping:

- National Economic Development (NED)
- Air quality
- Coral reefs
- Cultural Resources
- Ecologically critical areas
- Endangered and threatened species
- Environmental justice and civil rights
- Essential fish habitat
- Fish and wildlife (including coordination requirements)
- Floodplain management
- Forest resources
- Invasive species
- Land use
- Migratory birds
- Natural areas
- Parklands
- Prime and unique farmland, and farmland of statewide significance
- Public health and safety
- Regional water resource plans (including coastal zone plans)
- Riparian areas
- Scenic beauty
- Scientific resources
- Sole source aquifers
- Social issues
- Soil resources
- Water quality
- Water resources
- Waters of the United States, including special aquatic sites
- Wetlands
- Wild and scenic rivers

Other possible concerns:

- Delayed planting
- Prevented planting
- Crop damages from prolonged inundation
- Road damages
- Culvert and bridge wash outs
- Field erosion/deposition
- Breakout flows to Willow Creek/Drain 67
- Community impacts
- Channel erosion/deposition
- Transportation disruptions
- Business/Commerce disruptions

Please fill out the following information based on your priorities in the North Branch Watershed. Comments forms will be accepted for all forms postmarked on or before **March 17, 2016**. Completed comment forms can be mailed to the PRJWRD office at:

**Park River Joint Water Resource District
308 Courthouse Drive No. 5
Cavalier, ND 58220**

Or via email to lkemp@nd.gov

Name: _____

Address: _____

Affiliation: _____

(agency, resident, commissioner, mayor, etc...)

Circle the most appropriate ranking for each concern listed below. Refer to the KEY for definitions of each ranking. Concerns where the degree of concern is not indicated will be considered a zero value (No Concern or Not Relevant).

KEY: **0 = No Concern or Not Relevant** **1 = Minimal Concern** **2 = Minor Concern**
 3 = Moderate Concern **4 = Significant Concern** **5 = Severe Concern**

Required NEPA Concerns for Scoping:

• National Economic Development (NED).....	0	1	2	3	4	5
• Air quality.....	0	1	2	3	4	5
• Coral reefs.....	0	1	2	3	4	5
• Cultural Resources.....	0	1	2	3	4	5
• Ecologically critical areas.....	0	1	2	3	4	5
• Endangered and threatened species.....	0	1	2	3	4	5
• Environmental justice and civil rights.....	0	1	2	3	4	5
• Essential fish habitat.....	0	1	2	3	4	5
• Fish and wildlife (including coordination requirements).....	0	1	2	3	4	5
• Floodplain management.....	0	1	2	3	4	5
• Forest resources.....	0	1	2	3	4	5
• Invasive species.....	0	1	2	3	4	5
• Land use.....	0	1	2	3	4	5
• Migratory birds.....	0	1	2	3	4	5
• Natural areas.....	0	1	2	3	4	5
• Parklands.....	0	1	2	3	4	5
• Prime and unique farmland, and farmland of statewide significance.....	0	1	2	3	4	5
• Public health and safety.....	0	1	2	3	4	5

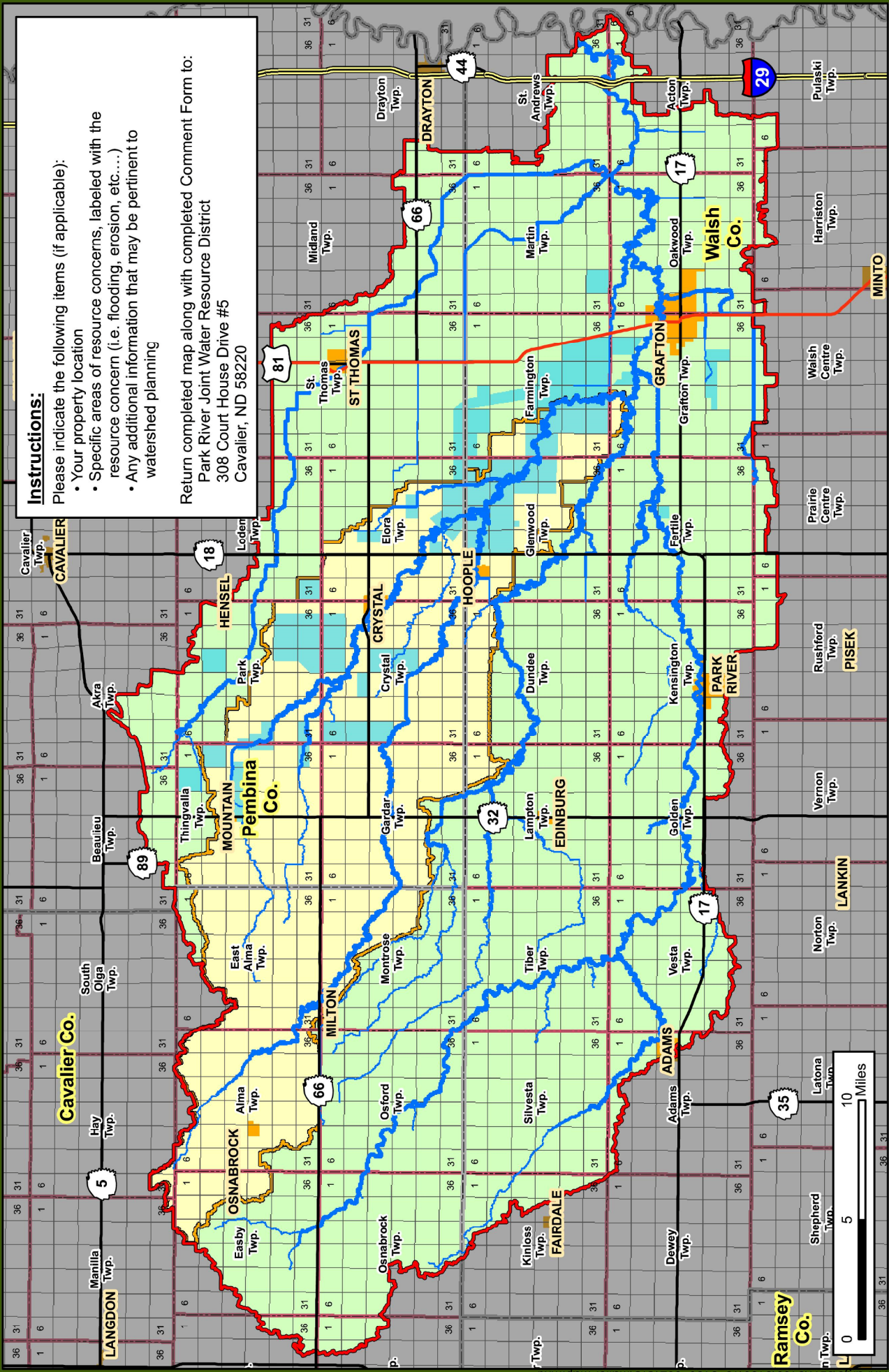
Continued on reverse page

- Regional water resource plans (including coastal zone plans).....0 1 2 3 4 5
- Riparian areas.....0 1 2 3 4 5
- Scenic beauty.....0 1 2 3 4 5
- Scientific resources.....0 1 2 3 4 5
- Sole source aquifers.....0 1 2 3 4 5
- Social issues.....0 1 2 3 4 5
- Soil resources.....0 1 2 3 4 5
- Water quality.....0 1 2 3 4 5
- Water resources.....0 1 2 3 4 5
- Waters of the United States, including special aquatic sites.....0 1 2 3 4 5
- Wetlands.....0 1 2 3 4 5
- Wild and scenic rivers.....0 1 2 3 4 5

Other possible concerns:

- Delayed planting.....0 1 2 3 4 5
- Prevented planting.....0 1 2 3 4 5
- Crop damages from prolonged inundation.....0 1 2 3 4 5
- Road damages.....0 1 2 3 4 5
- Culvert and bridge wash outs.....0 1 2 3 4 5
- Field erosion/deposition.....0 1 2 3 4 5
- Breakout flows to Willow Creek/Drain 67.....0 1 2 3 4 5
- Community impacts.....0 1 2 3 4 5
- Channel erosion/deposition.....0 1 2 3 4 5
- Transportation disruptions.....0 1 2 3 4 5
- Business/Commerce disruptions.....0 1 2 3 4 5
- _____ (Write-in).....0 1 2 3 4 5
- _____ (Write-in).....0 1 2 3 4 5
- _____ (Write-in).....0 1 2 3 4 5
- _____ (Write-in).....0 1 2 3 4 5

Additional Comments: _____






Instructions:



Please indicate the following items (if applicable):

- Your property location
- Specific areas of resource concerns, labeled with the resource concern (i.e. flooding, erosion, etc....)
- Any additional information that may be pertinent to watershed planning

Return completed map along with completed Comment Form to:
 Park River Joint Water Resource District
 308 Court House Drive #5
 Cavalier, ND 58220

Park River Joint Water Resource District
 North Branch Park River
 Watershed Planning
 Public Comment Form

 North Branch Watershed
 Park River Watershed
 July 1, 2014 Indicated Areas of Flood Concern

 County Boundary
 Township Boundary
 City Limits



Prepared By:

 Houston Engineering Inc.